

# ACCELERATOR CONTROL, FUEL & EXHAUST SYSTEMS

GI  
MA  
EM  
LC  
EC  
FE  
CL  
MT  
AT  
TF  
PD  
FA  
RA  
BR  
ST  
RS  
BT  
HA  
EL  
IDX

## SECTION FE

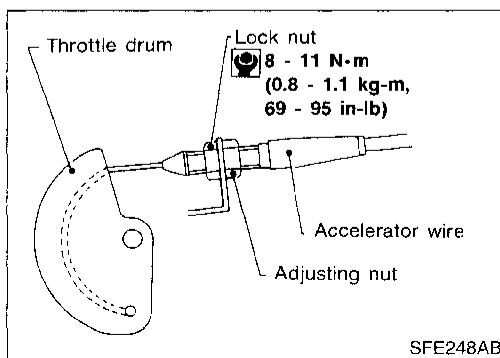
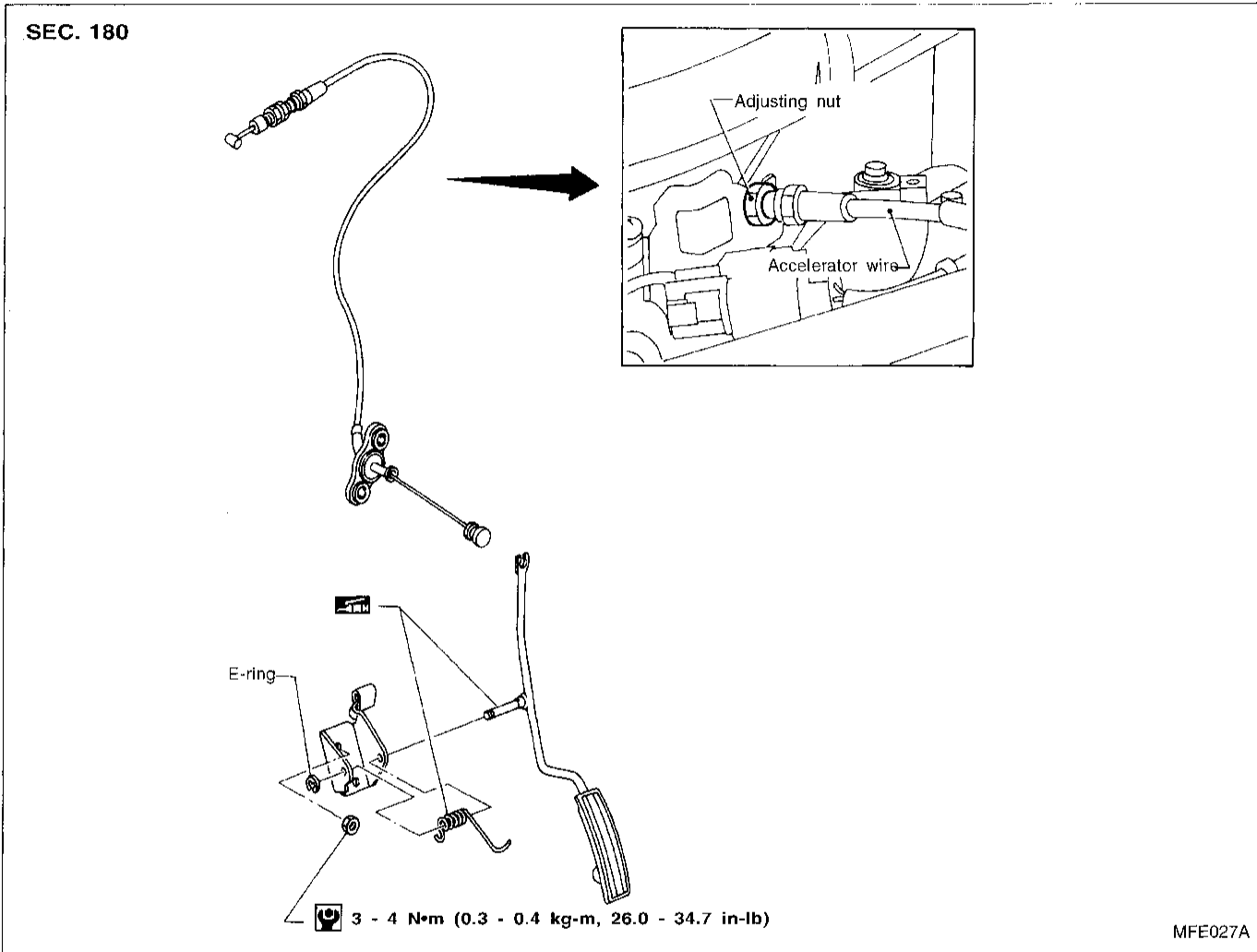
### CONTENTS

<b>ACCELERATOR CONTROL SYSTEM</b> .....	2	Fuel Tank .....	3
Adjusting Accelerator Wire .....	2	Fuel Pump and Gauge .....	6
<b>FUEL SYSTEM</b> .....	3	<b>EXHAUST SYSTEM</b> .....	7

# ACCELERATOR CONTROL SYSTEM

## CAUTION:

- When removing accelerator wire, mark lock nut's initial position.
- Check that throttle valve opens fully when accelerator pedal is fully depressed. Check that throttle valve returns to idle position when accelerator pedal is released.
- Check accelerator control parts for improper contact with any adjacent parts.
- When connecting accelerator wire, do not twist or scratch the inner wire.
- For adjustment of A/T throttle wire, refer to AT section ("Throttle Wire Adjustment", "ON-VEHICLE SERVICE").



## Adjusting Accelerator Wire

### CAUTION:

- Make sure the ASCD wire is not pulling the throttle drum.
  - For ASCD wire adjustment, refer to EL section ["AUTOMATIC SPEED CONTROL DEVICE (ASCD)"].
1. Loosen lock nut, and tighten adjusting nut until throttle drum starts to move.
  2. From that position turn back adjusting nut 1.5 to 2 turns, and secure lock nut.



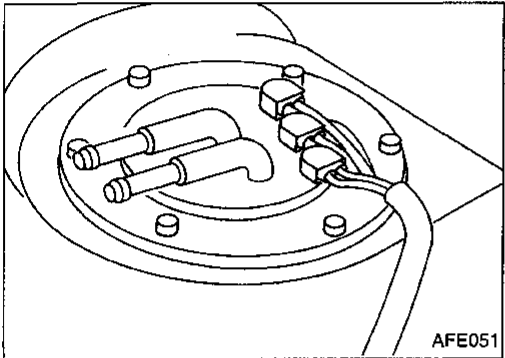
## FUEL SYSTEM

### Fuel Tank (Cont'd)

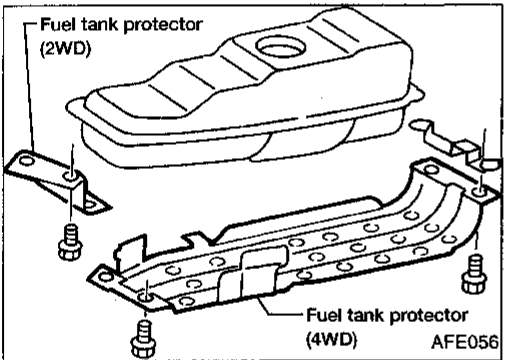
#### REMOVAL

##### CAUTION:

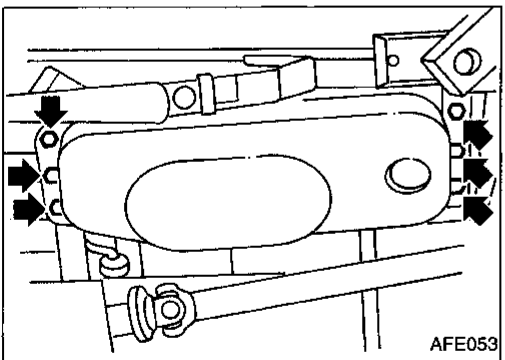
- Do not disconnect any fuel line unless absolutely necessary.
- Plug hose and pipe openings to prevent entry of dust or dirt.



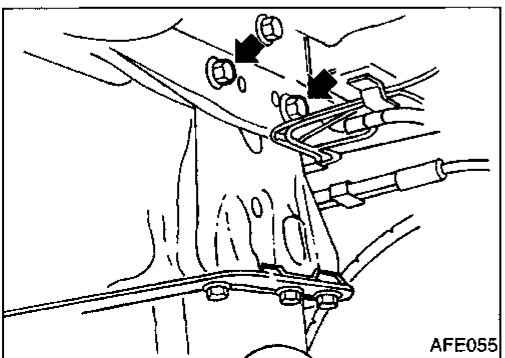
1. Release fuel pressure. Refer to EC section ("Fuel Pressure Release", "BASIC SERVICE PROCEDURE").
2. Disconnect battery ground cable.
3. Drain fuel from fuel tank.
4. Disconnect electrical connector.
5. Remove filler protector.
6. Disconnect filler tubes, fuel supply tube and fuel return tube.



7. Remove fuel tank protector.



8. Remove six tank mounting bolts while supporting fuel tank.

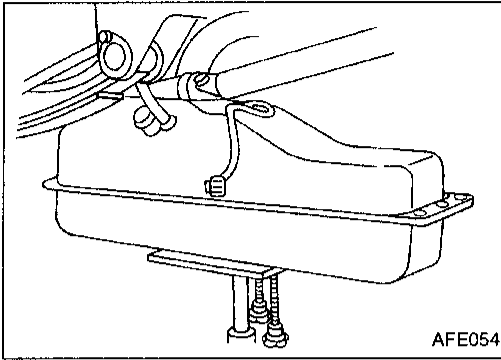


9. Remove rear fuel tank mounting bracket.

## FUEL SYSTEM

### Fuel Tank (Cont'd)

10. Remove fuel tank.



### INSTALLATION

To install, reverse the removal procedure.

#### CAUTION:

- Do not kink or twist hoses and tubes when they are installed.
- To avoid damaging hoses, do not tighten hose clamps excessively.
- Tighten bolts to specified torque.
- After installation, run engine and check for leaks at connections.

GI

MA

EM

LC

EC

FE

CL

MT

AT

TF

PD

FA

RA

BR

ST

RS

BT

HA

EL

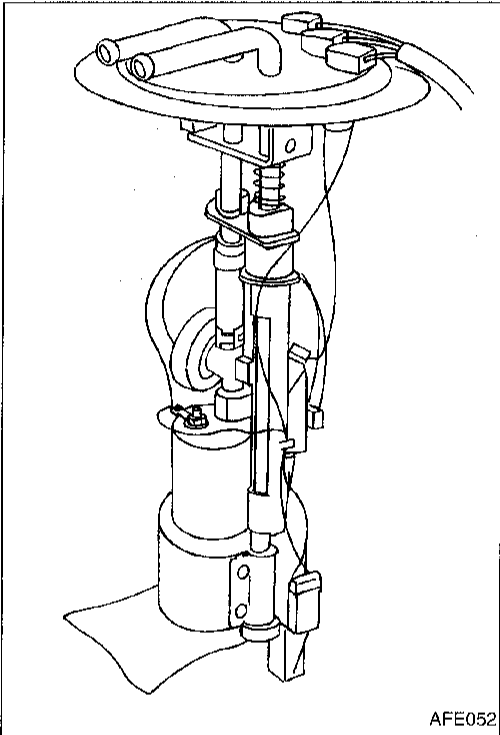
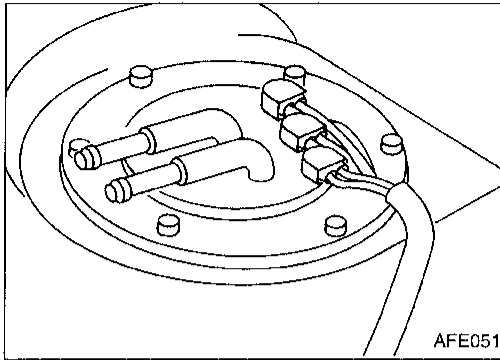
IDX

## FUEL SYSTEM

### Fuel Pump and Gauge

#### REMOVAL

1. Release fuel pressure.  
Refer to EC section ("Fuel Pressure Release", "BASIC SERVICE PROCEDURE").
2. Remove fuel tank. Refer to FE-4.
3. Disconnect fuel supply tube, return tube and electrical connector.
4. Remove the six screws.
5. Remove fuel pump and gauge.



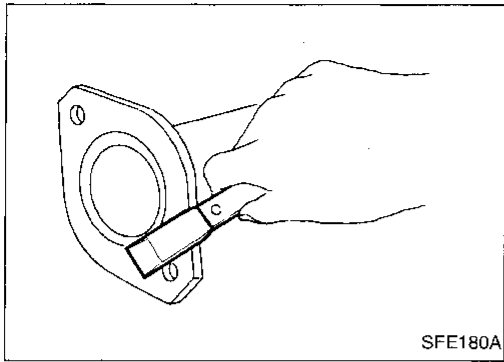
#### INSTALLATION

To install, reverse the removal procedure.

#### CAUTION:

- Tighten bolts to specified torque.  
☞: 2.0 - 2.5 N·m (0.20 - 0.26 kg·m, 17.4 - 22.6 in-lb)
- Always replace O-ring with a new one.
- After installation, run engine and check for leaks at connections.

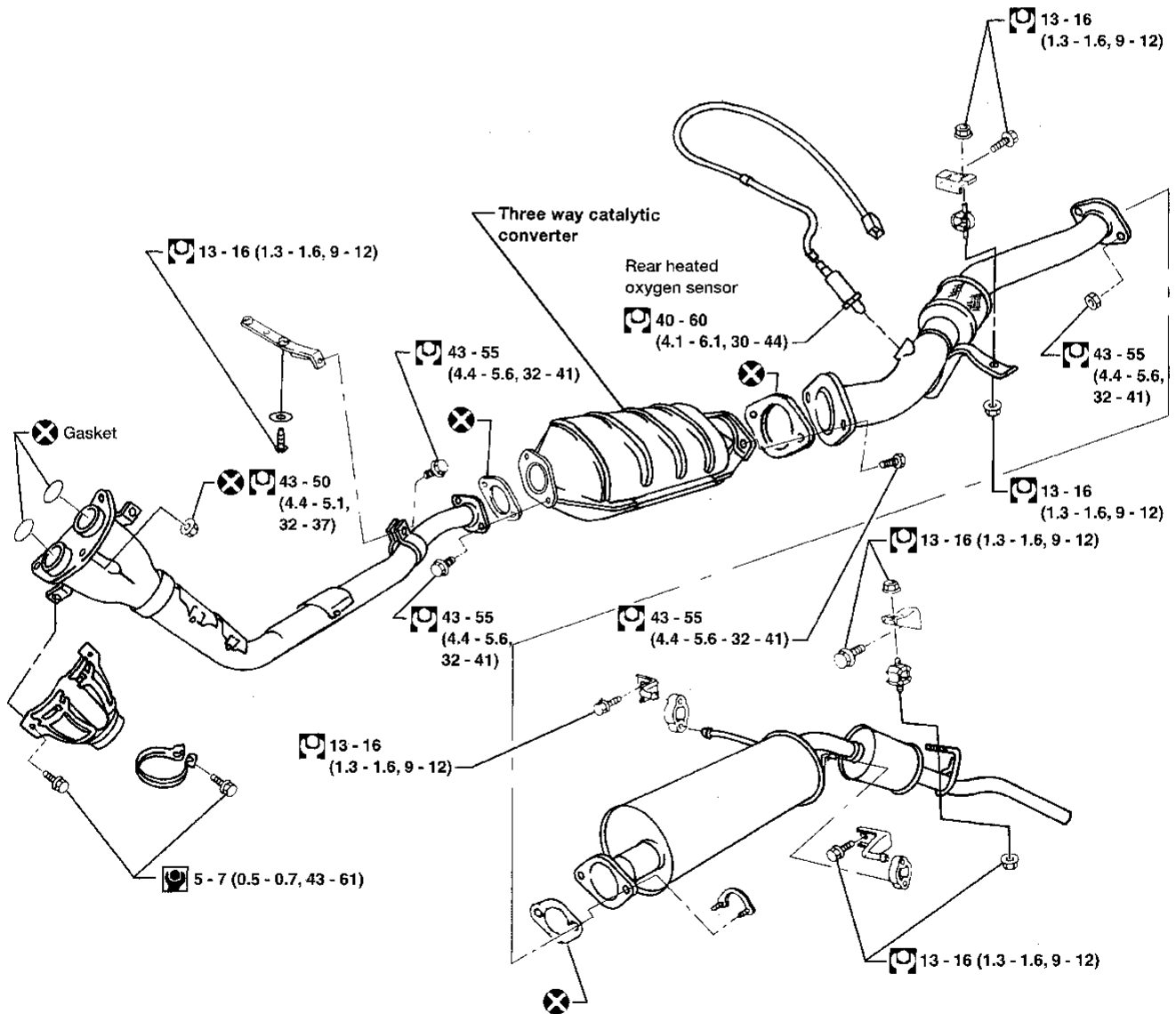
# EXHAUST SYSTEM



## CAUTION:

- Replace exhaust gaskets with new ones when reassembling.  
If gasket remains on flange surface, scrape off completely as shown at left.
- With engine running, check all tube connections for exhaust gas leaks, and entire system for unusual noises.
- Check to ensure that mounting brackets and mounting insulators are installed properly and are free from undue stress. Improper installation could result in excessive noise or vibration.
- Discard any heated oxygen sensor dropped from a height of more than 0.5 m (19.7 in) onto a hard surface such as a concrete floor; use a new one.

2WD model  
SEC. 200-208



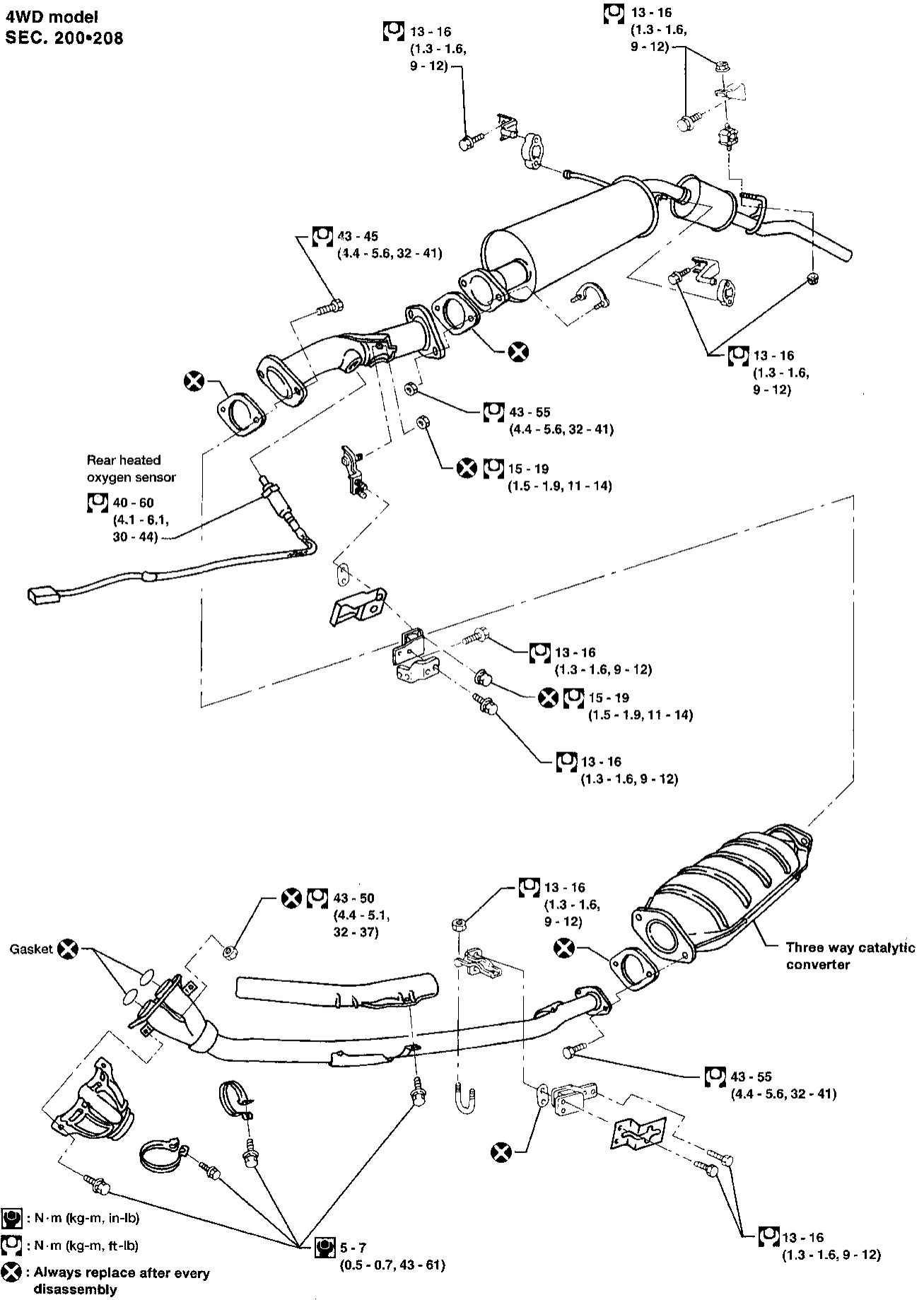
- ☐ : N·m (kg-m, in-lb)
- ⊞ : N·m (kg-m, ft-lb)
- ⊗ : Always replace after every disassembly

AFE049

GI  
MA  
EM  
LC  
EC  
FE  
CL  
MT  
AT  
TF  
PD  
FA  
RA  
BR  
ST  
RS  
BT  
HA  
EL  
IDX

# EXHAUST SYSTEM

4WD model  
SEC. 200-208



: N·m (kg-m, in-lb)

: N·m (kg-m, ft-lb)

: Always replace after every disassembly